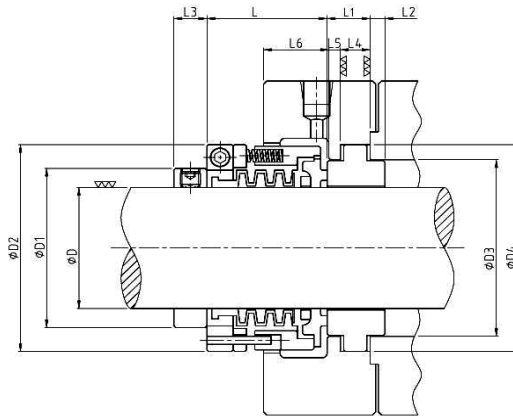


TYPE 550



Specification

Temperature : - 10°C ~ 120°C

Pressure : $\leq 4.5 \text{ kg/cm}^2$

Speed : $\leq 15 \text{ m/sec}$

| D | D1 | D2 | D3 | D4 | L | L1 | L2 | L3 | L4 | L5 | L6 |
|-----|-----|-------|-----|-----|------|----|----|----|----|----|----|
| 20 | 34 | 54.0 | 42 | 55 | 38.8 | 14 | 4 | 11 | 10 | 3 | 20 |
| 25 | 39 | 57.2 | 45 | 58 | 38.8 | 14 | 4 | 11 | 10 | 3 | 20 |
| 30 | 44 | 63.5 | 50 | 63 | 39.6 | 14 | 4 | 11 | 10 | 3 | 20 |
| 35 | 49 | 66.7 | 55 | 68 | 45.1 | 14 | 4 | 11 | 10 | 3 | 25 |
| 40 | 56 | 76.2 | 60 | 74 | 46.0 | 15 | 5 | 13 | 10 | 4 | 25 |
| 45 | 61 | 79.4 | 65 | 79 | 46.0 | 15 | 5 | 13 | 10 | 4 | 25 |
| 50 | 66 | 85.7 | 72 | 87 | 48.3 | 18 | 6 | 13 | 12 | 5 | 25 |
| 55 | 71 | 88.9 | 80 | 95 | 48.3 | 18 | 6 | 13 | 12 | 5 | 25 |
| 60 | 78 | 106.4 | 86 | 101 | 63.1 | 18 | 6 | 13 | 12 | 5 | 35 |
| 65 | 83 | 109.5 | 92 | 107 | 63.1 | 21 | 7 | 13 | 14 | 6 | 35 |
| 70 | 90 | 115.9 | 96 | 111 | 63.9 | 21 | 7 | 13 | 14 | 6 | 35 |
| 75 | 95 | 122.2 | 101 | 116 | 63.9 | 23 | 7 | 13 | 16 | 6 | 35 |
| 80 | 100 | 133.4 | 106 | 121 | 78.2 | 23 | 7 | 13 | 16 | 6 | 45 |
| 85 | 105 | 139.7 | 114 | 129 | 78.2 | 23 | 7 | 13 | 16 | 6 | 45 |
| 90 | 110 | 142.9 | 122 | 137 | 79.0 | 23 | 7 | 14 | 16 | 6 | 45 |
| 95 | 115 | 149.2 | 127 | 142 | 79.0 | 23 | 7 | 14 | 16 | 6 | 45 |
| 100 | 120 | 152.4 | 132 | 147 | 79.0 | 23 | 7 | 14 | 16 | 6 | 45 |