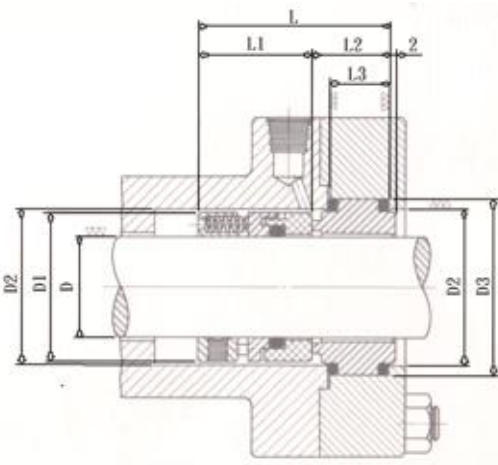


TYPE 11E



Specification

Temperature : - 60°C ~ 250°C

Pressure : $\leq 12 \text{ kg/cm}^2$

Speed : $\leq 25 \text{ m/sec}$

| D | D1 | D2 | D3 | L | L1 | L2 | L3 |
|-----|-----|-----|-----|----|----|----|----|
| 20 | 34 | 36 | 42 | 58 | 35 | 23 | 18 |
| 22 | 36 | 38 | 44 | 58 | 35 | 23 | 18 |
| 24 | 38 | 40 | 46 | 58 | 35 | 23 | 18 |
| 25 | 39 | 41 | 47 | 58 | 35 | 23 | 18 |
| 28 | 42 | 44 | 50 | 58 | 35 | 23 | 18 |
| 30 | 44 | 46 | 52 | 58 | 35 | 23 | 18 |
| 32 | 46 | 48 | 54 | 58 | 35 | 23 | 18 |
| 33 | 47 | 49 | 55 | 58 | 35 | 23 | 18 |
| 35 | 49 | 51 | 57 | 58 | 35 | 23 | 18 |
| 38 | 54 | 58 | 64 | 63 | 38 | 25 | 20 |
| 40 | 56 | 60 | 66 | 63 | 38 | 25 | 20 |
| 43 | 59 | 63 | 69 | 63 | 38 | 25 | 20 |
| 45 | 61 | 65 | 71 | 63 | 38 | 25 | 20 |
| 48 | 64 | 68 | 74 | 63 | 38 | 25 | 20 |
| 50 | 66 | 70 | 76 | 64 | 39 | 25 | 20 |
| 53 | 69 | 73 | 79 | 65 | 40 | 25 | 20 |
| 55 | 71 | 75 | 81 | 65 | 40 | 25 | 20 |
| 58 | 76 | 83 | 89 | 69 | 41 | 28 | 22 |
| 60 | 78 | 85 | 91 | 69 | 41 | 28 | 22 |
| 63 | 81 | 88 | 94 | 69 | 41 | 28 | 22 |
| 65 | 83 | 90 | 96 | 69 | 41 | 28 | 22 |
| 68 | 86 | 93 | 99 | 71 | 41 | 30 | 24 |
| 70 | 90 | 95 | 101 | 72 | 42 | 30 | 24 |
| 75 | 95 | 104 | 110 | 72 | 42 | 30 | 24 |
| 80 | 100 | 109 | 115 | 73 | 42 | 31 | 25 |
| 85 | 105 | 114 | 120 | 74 | 43 | 31 | 25 |
| 90 | 110 | 119 | 125 | 76 | 45 | 31 | 25 |
| 95 | 115 | 124 | 130 | 76 | 45 | 31 | 25 |
| 100 | 120 | 129 | 135 | 76 | 45 | 31 | 25 |