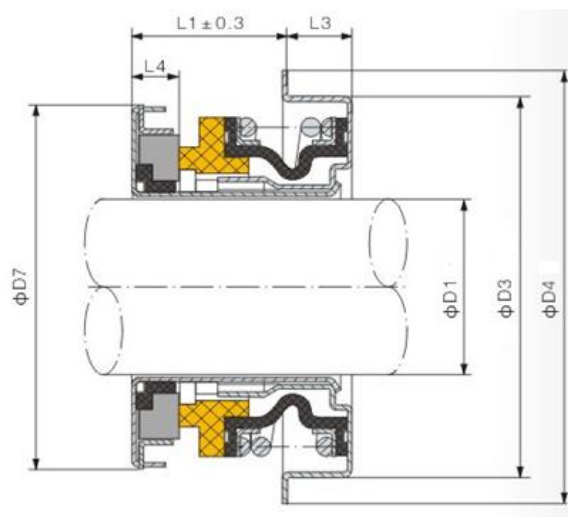
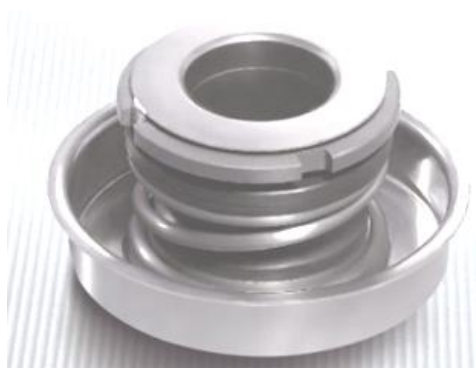


TYPE 7LB



Specification

Temperature : - 20°C ~ 100°C

Pressure : $\leq 5 \text{ kg/cm}^2$

Speed : $\leq 5 \text{ m/sec}$

| D1 | D3 | D4 | D7 | L1 | L3 | L4 |
|-----|------|------|------|------|------|-----|
| 12 | 30 | 35 | 26.8 | 9.7 | 8.0 | 4.5 |
| 16 | 34.2 | 38.8 | 33 | 12.4 | 5.6 | 4 |
| 20 | 52 | 57.2 | 36.5 | 13.7 | 10.5 | 4.8 |
| 20B | 40 | 46 | 34.5 | 13.2 | 11.0 | 6 |