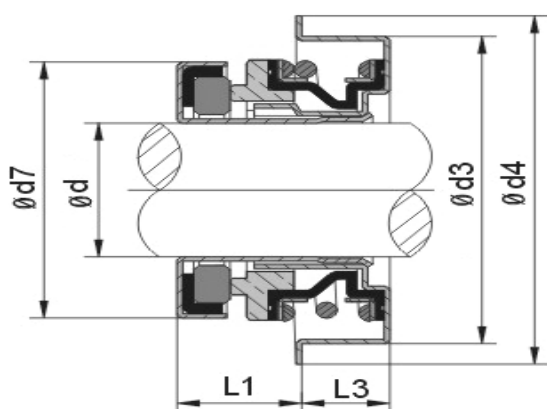


TYPE 7L



Specification

Temperature : - 20°C~200°C

Pressure : $\leq 5 \text{ kg/cm}^2$

Speed : $\leq 15\text{m/sec}$

size	d	d3	d4	d7	L1	L3
7L-12S	12	28.55	32.0	25/26	9.5	8.0
7L-12M	12	30.00	35.0	25/26	9.5	8.0
7L-12L	12	33.40	38.0	25/26	10.8	6.7
7L-13	13	30.00	35.0	25/26	10.0	8.0
7L-15	15	36.45	41.5	30.5	12.5	8.0
7L-16	16	36.45	41.5	30.5	12.5	8.0
7L-16S	16	36.45	41.5	28.0	11.5	8.5
7L-16M	16	36.45	41.5	31.5	11.5	9.0
7L-16L	16	38.10	43.5	30.5	12.5	8.0
7L-16LD	16	38.10	43.5	28.5	12.5	8.0
7L-20	20	38/40	43.8	37.0	12.5	9.5
7L-20S	20	40.00	43.8	37.0	12.5	9.5